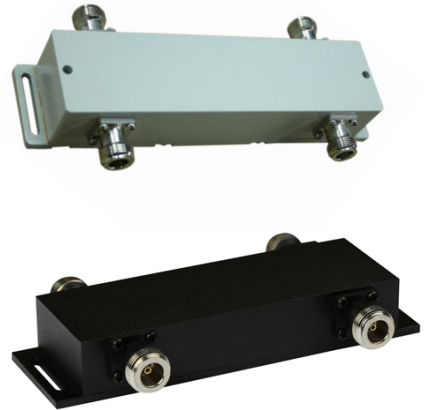


Highlights

- Integrated cavity design: minimizes solder joints and optimizes PIM performance, guaranteeing superior performance and reliability.
- Lower PIM, lower insertion loss, higher isolation, and higher power handling capacity.
- IP66 protection enables stable working in any environment.
- Compact design, easy installation.
- Lifetime warranty.



ELECTRICAL SPECIFICATIONS

Models	V4H727-N5 (Indoor)	V4H727-N5P(Outdoor IP66)
Frequency	698–2700MHz	
Intermodulation	≤-150dBc (IMD3 with 2×20W)	
Insertion Loss	≤0.6dB	
Inband Ripple	≤1.0dB	
Isolation	≥25dB	
VSWR	≤1.22	
Impedance	50Ω	
Power Handling	300w Average	
MTBF	≥500,000h	

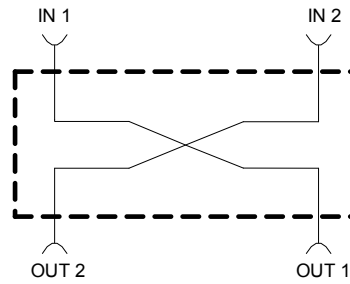
ENVIRONMENT SPECIFICATIONS

Operating Temperature	-30°C to +75°C -22°F to +167°F	
Storage Temperature	-40°C to +85°C -40°F to +185°F	
Relative Humidity	Up to 95%	
Application	Indoor	Outdoor (IP66)

MECHANICAL SPECIFICATIONS

Color	Gray or Black
Connectors	N-Female
Weight	0.41Kg 0.9lb
Dimensions	187.5*42*34mm 7.4*1.65*1.34in

Block Diagram



Outline Drawing

